

# SPARTAN VILLAGE

Available to residents  
in the fall of 2013

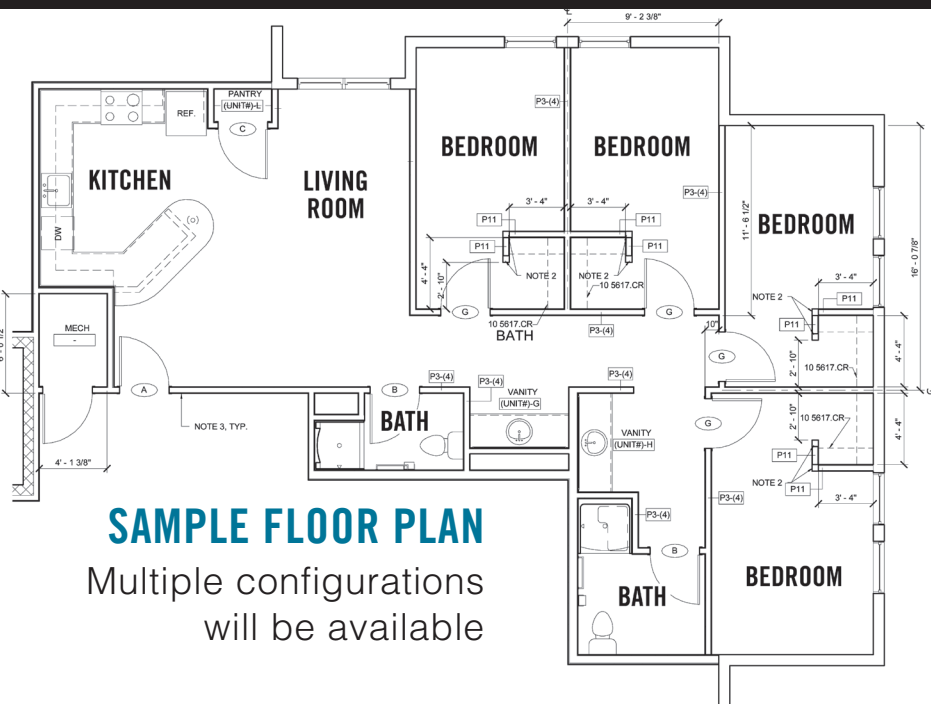


LORD · AECK · SARGENT  
ARCHITECTURE

## AMENITIES IN THE ROOMS OF SPARTAN VILLAGE

Elevator access to upper floors • A central laundry room • Single rooms with extra long full beds (54" x 80") • First floor trash room  
Every residential room is air-conditioned, carpeted, has a sink outside the bathroom, a large closet for each of the occupants, and mini-blinds  
No more than two residents share a bathroom equipped with ceramic tile and fiberglass showers  
Typical room furniture includes a loftable bed, desk, desk/task chair, dresser, and lockable credenza

## LUXURIOUS, UNCG CAMPUS APARTMENTS



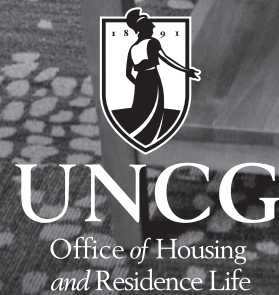
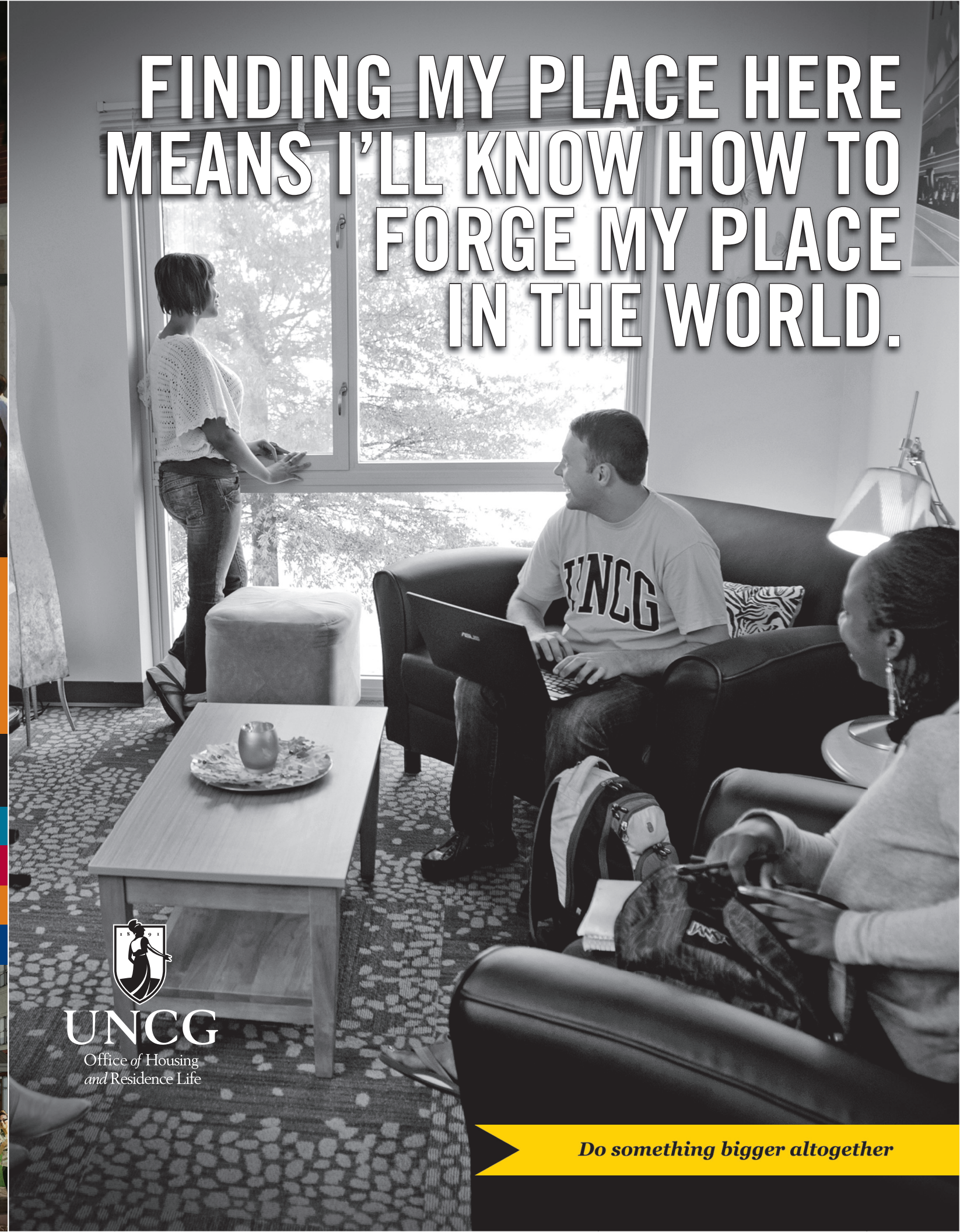
### SAMPLE FLOOR PLAN

Multiple configurations  
will be available

- LEE HALL
- HIGHLAND HALL
- HAYWOOD HALL
- UNION HALL



# FINDING MY PLACE HERE MEANS I'LL KNOW HOW TO FORGE MY PLACE IN THE WORLD.



*Do something bigger altogether*

# IMMERSE YOURSELF

There's no easier way to get involved at UNCG than to live on campus.

Students who live at UNCG are immersed in a diverse and inclusive campus environment where they interact with different kinds of people who offer unique perspectives.

They are given more opportunities to form friendships, to attend campus events, and to easily access faculty and other support services on campus.

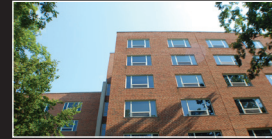
UNCG offers different housing styles designed to meet the needs of students as they transition through college. This brochure describes every campus housing option.\*

## TRADITIONAL HOUSING

DOUBLE-OCCUPANCY ROOMS LOCATED ON BOTH SIDES OF A LONG CORRIDOR WITH COMMUNITY BATHROOMS THAT SERVE THE FLOOR, PERFECT FOR NEW STUDENTS WHO WISH TO MAKE CONNECTIONS WITH MANY OTHER NEW STUDENTS.

### THE HIGH RISES

Cone/Grogan/Reynolds



- Two elevators, available to take students to all (eight or nine) floors of the building
- Beds that can be bunked to provide more floor space
- A large community room in the basement, to study, watch TV, or socialize
- Basement game room with ping pong and pool tables
- Full kitchen and laundry facilities in the basement

### GUILFORD



- Three floors
- Basement with laundry facilities
- Unique architectural features, such as high ceilings, gabled windows
- Angled stairwells with geometric-shaped windows overlooking a beautiful courtyard
- Recently refurbished bathrooms
- Beds that bunk to provide more floor space
- Large, formal parlor on the first floor for students to study, watch TV or socialize
- Beautiful full kitchen on the first floor

### MARY FOUST



- Three floors
- Basement with laundry facilities
- Unique architectural features, such as high ceilings, gabled windows
- Angled stairwells with geometric-shaped windows overlooking a beautiful courtyard
- Recently refurbished bathrooms
- Beds that bunk to provide more floor space
- Large, formal parlor on the first floor for students to study, watch TV or socialize
- Beautiful full kitchen on the first floor

### MOORE/STRONG



- Three floors
- Double-occupancy rooms and some suites in the center of the building
- Bedrooms with a Captain's bed with six large drawers underneath, a wardrobe with hanging space and a mirror on one of the doors
- Large community room available for relaxation, recreation, or study

### PHILLIPS/HAWKINS



- Five floors
- Community rooms located throughout the building for studying or socializing
- Game room/common area in an expansive lobby
- Large full kitchen in the basement
- Laundry facilities located on the third floor
- Kitchenettes with refrigerators and microwaves on every floor

### RAGSDALE/MENDENHALL



- Sinks in rooms
- Two beautifully paneled, sprawling lounges, located on the first floor, available for relaxation, recreation, study, or TV viewing
- Full kitchen on the first floor
- Laundry facilities available on the second floor
- Large, walk-in closets

### NORTH/SOUTH SPENCER



- Two floors
- A basement with a large game room and television
- Beds that can be bunked to provide more floor space
- A large parlor on the first floor for students to study or socialize
- Kitchens and laundry rooms on the first and second floors
- A computer lab

### WEIL/WINFIELD



- Sinks in rooms
- Large, walk-in closets
- Beautifully paneled lounges, located on the first floor, available for relaxation, recreation, study, or TV viewing
- Kitchen facilities on the first floor
- Near the tennis courts, intramural fields, practice greens, basketball and beach volleyball courts

### Amenities in Every Residence Hall

Air-Conditioning • Wireless Internet Access • Laundry Facilities  
Common Areas/TVs on at Least One Floor per Building • 24/7 Visitation  
Cable TV/Broadband\* • Sprinkler Systems • Vending Machines  
At Least one Full Kitchen or Kitchenette in Every Residence Hall

### Amenities in Every Student Room

PER STUDENT: Chair • Desk • Bed • Internet port • Dresser • Wardrobe or Closet  
PER ROOM: One Cable Jack And One Phone Jack\*\*

\*73 TimeWarner Cable standard channels plus HBO & Showtime  
\*\*Telephone service is not provided—students may contact Time Warner Cable for land line phone service

**SUITES** COMPOSED OF PRIVATE BEDROOMS, A FURNISHED LIVING ROOM AND SEMI-PRIVATE BATHROOMS SHARED AMONG SUITE-MATES.

**APARTMENTS** INCLUDE FOUR BEDROOM UNITS WITH A FULL KITCHEN, LIVING ROOM AND TWO BATHROOMS FOR FOUR RESIDENTS TO SHARE. OFFER THE OFF-CAMPUS FEEL THAT UPPERCLASSMEN GENERALLY PREFER.

## JEFFERSON SUITES



- Six floors
- A variety of housing configurations
- Six single suites and eight double suites per typical floor
- Single suites: four single rooms that share two bathrooms and a common area in several different configurations, with full-sized beds (54" x 80")
- Double suites: two double-occupancy rooms, each with its own bathroom and a shared common area, with extra long twin beds (36" x 80")
- First floor amenities: A large multi-purpose lobby and recreation room, huge full kitchen, Bojangles Restaurant
- Amenities on other floors: Full kitchen, study room, music practice room, trash disposal room
- Large combined laundry room/study room on the second floor, overlooking lobby

## THE QUAD

Bailey/Coit/Cotten/Gray/Hinshaw/Jamison/Shaw



- Seven buildings, three floors each
- Suite layouts:
  - Single and double rooms with private bath
  - Two-person (two single rooms), three-person (one single and one double room) and four person suites (two double rooms) with shared bath
- Elevator access to upper floors
- Laundry rooms on every floor
- Sinks outside the bathroom
- Closet (generally 2' x 4') for each of the occupants
- Mini-blinds and carpeting
- No more than 4 students share a bathroom.
- Air-conditioning with thermostat control
- Buildings are ADA accessible, with an abundance of ADA accessible rooms
- First floor trash room
- New walkways and seating areas scattered in a beautifully landscaped, grassed common area

## TOWER VILLAGE



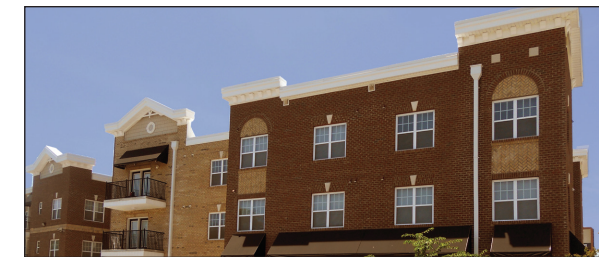
- Four private bedrooms (five in corner units) that share one bathroom, including vanity with two or three sinks, mirror, separate toilet, and shower room
- Shared living room/dining area with love seat, chair(s), two lamps, two side tables, and a TV/DVD cabinet.
- Recessed kitchen area - includes a frost-free refrigerator, a stove and oven, a microwave, a sink, and cabinets

## SPRING GARDEN



- Four private bedrooms with a full kitchen, living room, and two bathrooms for four residents to share
- Full-sized bed, dresser, built-in desk, desk chair and a ceiling fan with light in each room
- Ample common living room, with couch, chair, entertainment center, coffee table, and end table
- Kitchen with an oven, stove, microwave, full-sized refrigerator, dishwasher, and counter with four bar stools

## LOFTS ON LEE



- A variety of housing options: 1 bed/1 bath, 2 bed/2 bath, & 4 bed/4 bath apartments
- A private bathroom for each resident
- A full-size washer and dryer for each apartment
- Modern kitchens with built-in microwaves, kitchen islands and granite counter tops
- Ceiling fans, walk-in closets in all rooms
- Patio/Balcony, stained concrete floors (varied availability)
- Frieze-style carpet in bedrooms
- Security entrance access to apartment corridors

## HAVE YOU DECIDED TO LIVE ON CAMPUS?

All of the information you need will be posted on the housing website, at <http://hrl.uncg.edu>, including:

### 2013-2014 ROOM RATES

Projected room rates are available on the Housing and Residence Life website under "Rates and Contracts." Finalized rates will be available in **January, 2013.**

### WHEN AND HOW DO I APPLY?

To apply for 2013-14 housing and see important deadlines, please visit the website under "Apply for Housing," beginning in **February, 2013.**

### WHO IS HOUSED WHERE?

\*Where you are housed depends upon several variables: class year, membership in Special Interest Communities and other factors. Details of your options will be outlined on the website.

### NEW HOUSING OPTIONS

New housing options will be available to students in Spartan Village, beginning in fall of 2013. **Please see back page for more details about Spartan Village. >>**

Please visit the Housing and Residence Life website {<http://hrl.uncg.edu>} to see room rates, application deadlines and current housing information.